



2320 Holmes Rd

2320 Holmes Rd, Houston, TX 77051



PIPELINE REALTY
COMMERCIAL INVESTMENT, DEVELOPMENT & MANAGEMENT



Christopher Powell

Pipeline Realty Brokerage
2330 Holmes Rd, Houston, TX 77051
chrisp@pipelinerealty.com
(713) 799-5973

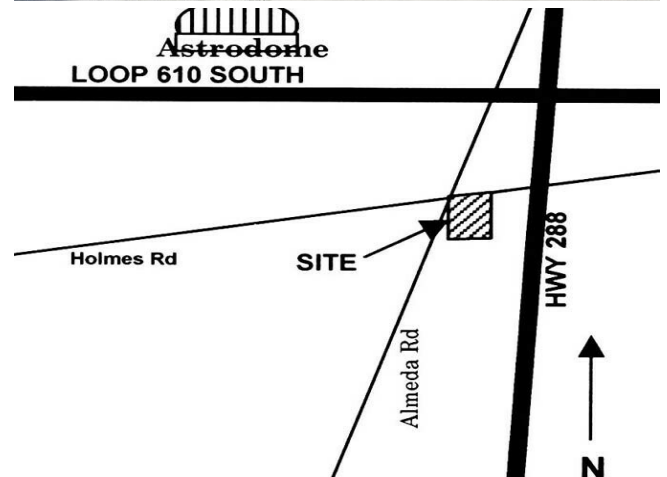


2320 Holmes Rd

Call for more information

5,000 SF Former engineering office available at Holmes Rd & Almeda

- Easy access to SH-288 and South Loop 610
- Parking directly outside the space
- Fenced and gated facility



Rental Rate:	Upon Request
Property Type:	Office
Property Subtype:	Office
Building Class:	B
Rentable Building Area:	5,000 SF
Year Built:	N/A
Walk Score ®:	18 (Car-Dependent)
Transit Score ®:	56 (Good Transit)
Rental Rate Mo:	Upon Request

1st Floor

Space Available	5,000 SF	5,000 SF Former engineering office
Rental Rate	Upon Request	
Date Available	July 1, 2020	
Service Type	Negotiable	
Built Out As	Standard Office	
Space Type	Relet	
Space Use	Office	
Lease Term	3 - 10 Years	

Major Tenant Information

Tenant

SF Occupied

Lease Expired

-



2320 Holmes Rd, Houston, TX 77051

5,000 SF Former engineering office available at Holmes Rd & Alameda